

Mundtlig hørelære 2001

Intervaller

A musical staff in treble clef showing a sequence of intervals starting from C4. The notes are: C4 (one line), D4 (two lines), E4 (three lines), F4 (four lines), G4 (one line, one sharp), A4 (two lines, one sharp), B4 (three lines, one sharp), and C5 (four lines, one sharp).

Treklange

9 F_M B^b_{SUS} C⁰ G⁺ E^b A_M

A musical staff in treble clef with seven measures. Each measure contains a horizontal line representing a triad chord. The chords are: F_M, B^b_{SUS}, C⁰, G⁺, E^b, and A_M.

Firklange

15 G_{MAT} D_M^{7b5} A_M⁷ B^{b7} E₀₇ A₇(_{13b9})

A musical staff in treble clef with six measures. Each measure contains a horizontal line representing a tetrad chord. The chords are: G_{MAT}, D_M^{7b5}, A_M⁷, B^{b7}, E₀₇, and A₇(_{13b9}).

Harmoniske Progressioner

21 F_{MAT} D⁷ G_M⁷ C⁷ A_M⁷ D⁷ G_M⁷ C⁷ F_{MAT} C_M⁷ F⁷ B^b_{MAT} B^b_M⁷ E^{b7}

A musical staff in treble clef with eight measures. Each measure contains a horizontal line representing a chord. The chords are: F_{MAT}, D⁷, G_M⁷, C⁷, A_M⁷, D⁷, G_M⁷, C⁷, F_{MAT}, C_M⁷, F⁷, B^b_{MAT}, B^b_M⁷, and E^{b7}.

29 F_{MAT} E_M^{7b5} A⁷ D_M⁷ G⁷ G_M⁷ C⁷ F_{MAT}

A musical staff in treble clef with seven measures. Each measure contains a horizontal line representing a chord. The chords are: F_{MAT}, E_M^{7b5}, A⁷, D_M⁷, G⁷, G_M⁷, C⁷, and F_{MAT}.

Vokal Imitation

37

A musical staff in treble clef showing a melody. It starts with a quarter note G4, followed by quarter notes A4, B4, C5, and D5. There is a slur over the last three notes. The melody then descends: quarter note C5, quarter note B4, quarter note A4, quarter note G4, quarter note F4, quarter note E4, quarter note D4, quarter note C4.

41

A musical staff in treble clef showing a melody. It starts with a quarter note G4, followed by quarter notes A4, B4, C5, and D5. There is a slur over the last three notes. The melody then descends: quarter note C5, quarter note B4, quarter note A4, quarter note G4, quarter note F4, quarter note E4, quarter note D4, quarter note C4.

Rytmisk Imitation

45

A musical staff in treble clef showing a rhythmic pattern. It consists of eighth notes. The first measure has two eighth notes. The second measure has a triplet of eighth notes. The third measure has a quartet of eighth notes. The fourth measure has a triplet of eighth notes. The fifth measure has a triplet of eighth notes. The sixth measure has a triplet of eighth notes. The seventh measure has a triplet of eighth notes. The eighth measure has a triplet of eighth notes.

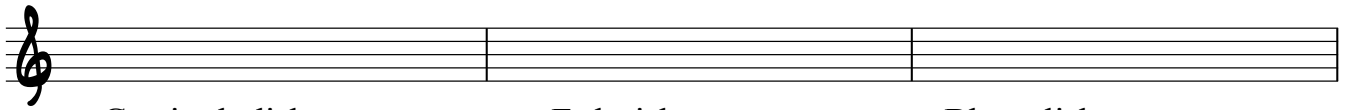
49

A musical staff in treble clef showing a rhythmic pattern. It consists of eighth notes. The first measure has two eighth notes. The second measure has a triplet of eighth notes. The third measure has a triplet of eighth notes. The fourth measure has a triplet of eighth notes. The fifth measure has a triplet of eighth notes. The sixth measure has a triplet of eighth notes. The seventh measure has a triplet of eighth notes. The eighth measure has a triplet of eighth notes.

Optagelsesprøve 2001

Det Fynske Musikkonservatorium

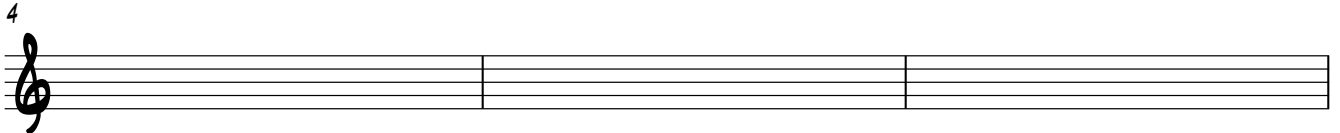
Notér flg. skalaer :



G-mixolydisk

F-dorisk

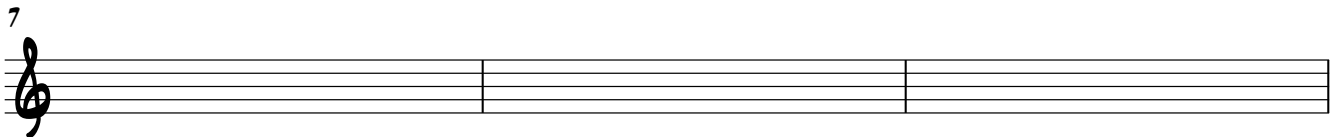
Bb-æolisk



D-lydisk

A-frygisk

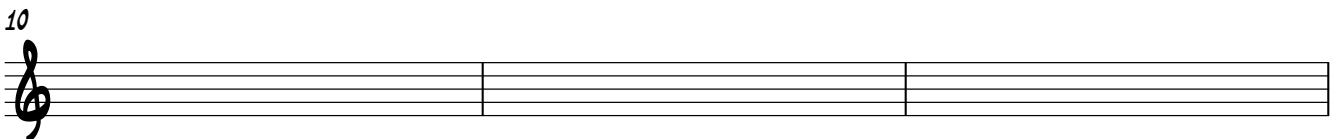
G#-lokrisk



Gb-ionisk

Bb-harmonisk mol

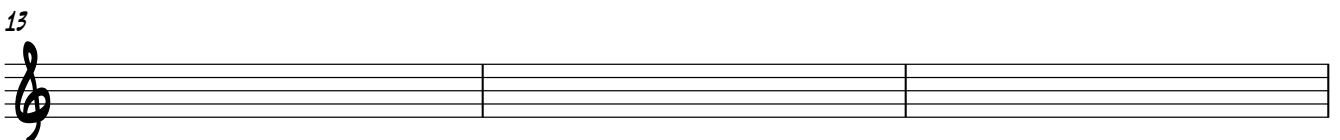
E-frygisk



A-ionisk

C#-lokrisk

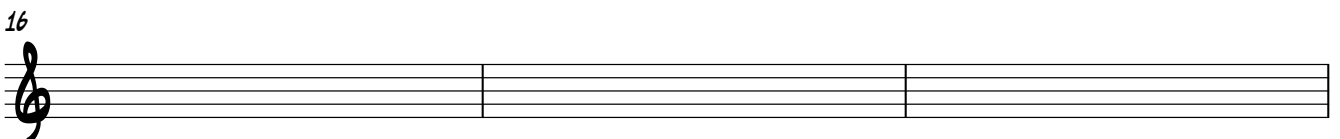
Bb-dorisk



Eb-melodisk mol

F-lydisk

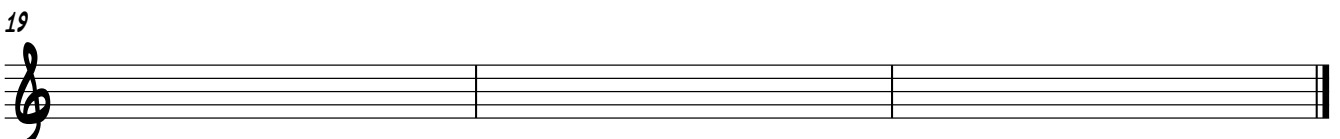
E-mixolydisk



E-harmonisk mol

E-æolisk

Eb-ionisk



G-melodisk mol

C-mixolydisk

A-dorisk

Notér flg. akkorder :

G_{MAJ}7 **B^b_M7** **D_M(MAJ7)** **A7**

A musical staff with a grand staff (treble and bass clefs) divided into four measures. The chord symbols are written above the staff: G_{MAJ}7, B^b_M7, D_M(MAJ7), and A7.

5 **A^b6** **A^b** **C^o** **C_M7^{b5}**

A musical staff with a grand staff (treble and bass clefs) divided into four measures. The chord symbols are written above the staff: A^b6, A^b, C^o, and C_M7^{b5}. A measure number '5' is written at the beginning of the first measure.

9 **B^b_{SUS}4** **E^b_M** **B7** **D^b_{MAJ}7**

A musical staff with a grand staff (treble and bass clefs) divided into four measures. The chord symbols are written above the staff: B^b_{SUS}4, E^b_M, B7, and D^b_{MAJ}7. A measure number '9' is written at the beginning of the first measure.

13 **C_M7** **G⁷_{SUS}4** **F⁶/9** **B^b_M7**

A musical staff with a grand staff (treble and bass clefs) divided into four measures. The chord symbols are written above the staff: C_M7, G⁷_{SUS}4, F⁶/9, and B^b_M7. A measure number '13' is written at the beginning of the first measure. The staff ends with a double bar line.

Notér becifring på flg. akkorder(alle med grundtone i bunden) :

5

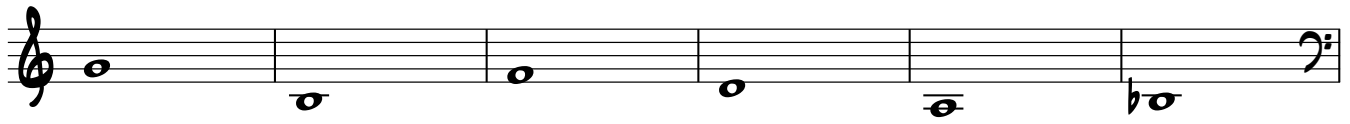
9

13

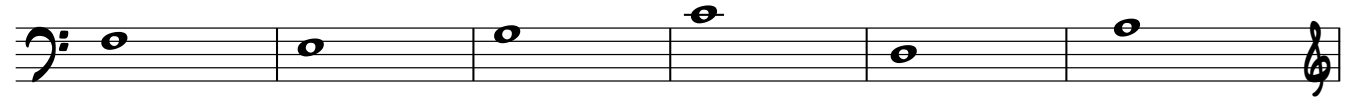
Udfyldningsopgave : notér de to miderste stemmer mellem melodi og bas

17 E^bMAT⁹ D_M7^{bs} G7^{bs} C_M7 F7^{bs} B^bMAT⁷

Intervaller : skriv den øverste tone i det forespillede interval.



7

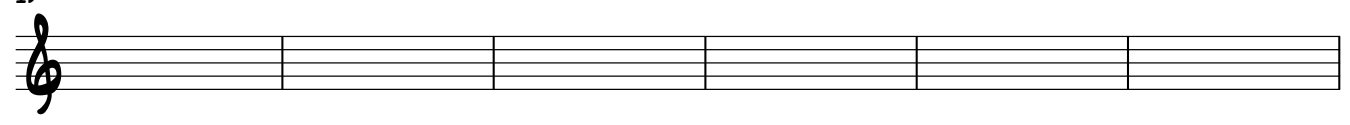


13

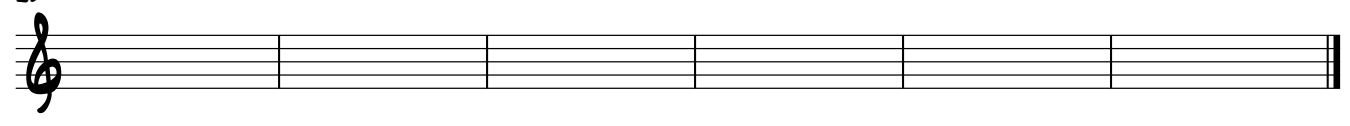


3-klange

19

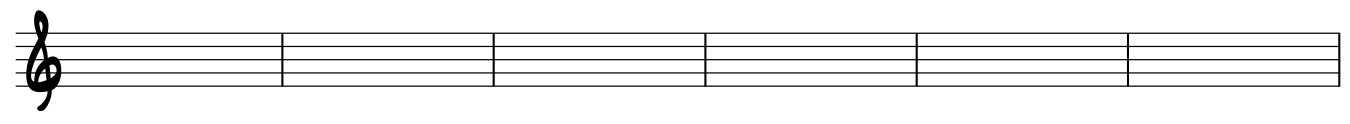


25

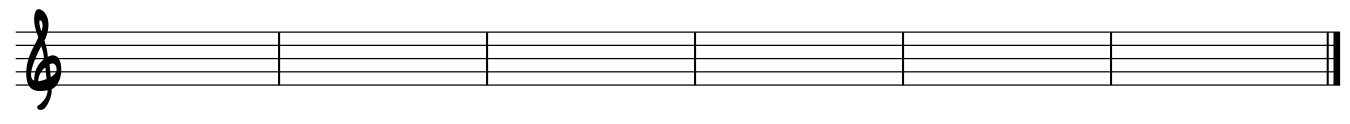


4-klange

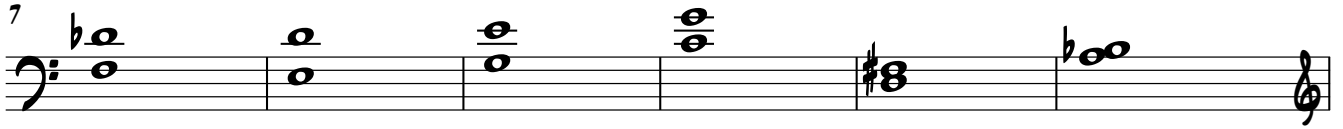
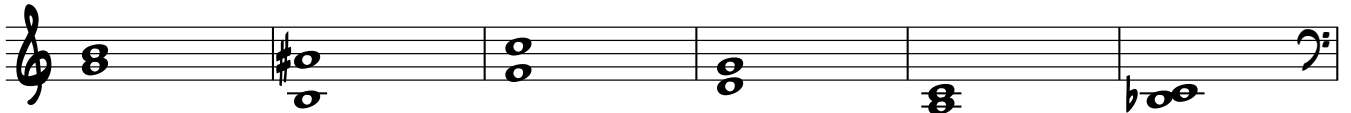
31



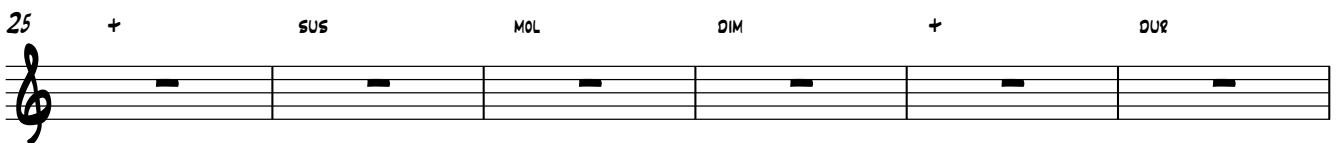
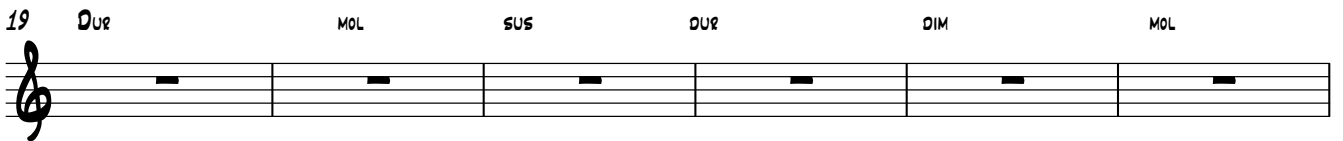
37



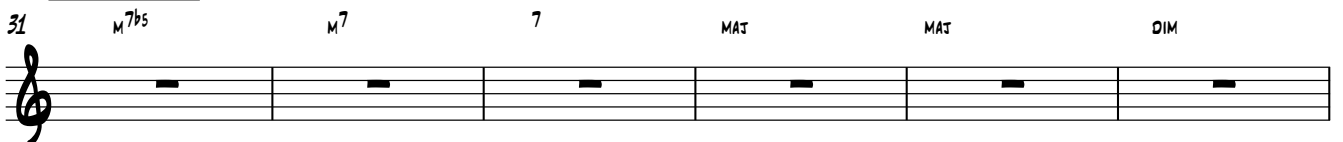
Intervaller : skriv den øverste tone i det forespillede interval.



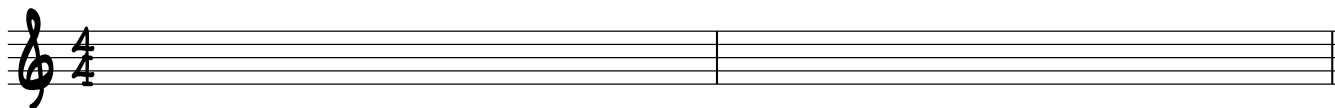
3-klange



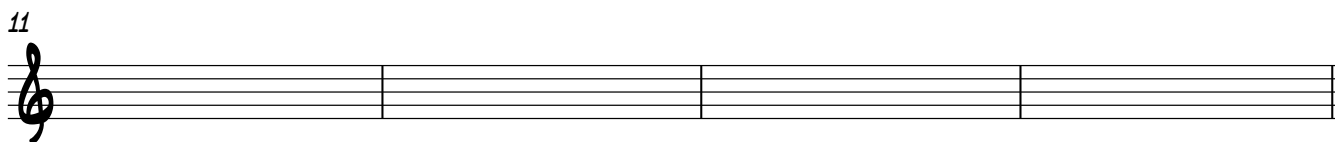
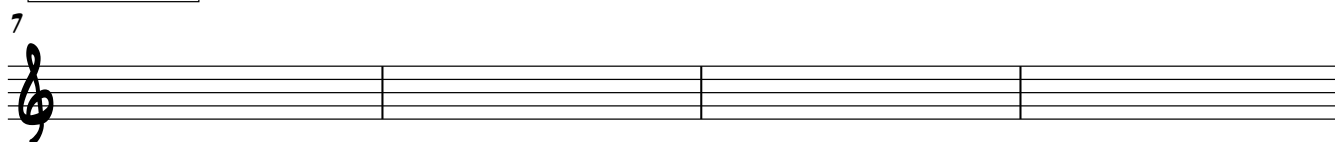
4-klange



Rytmenotation



Båndex. 1



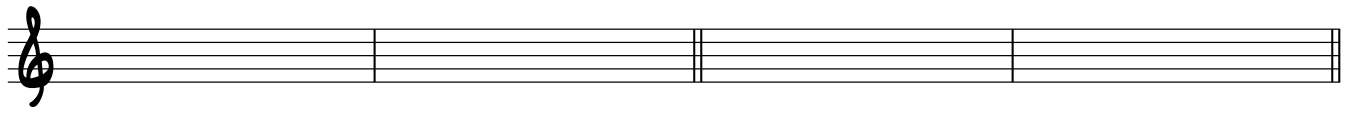
Båndex. 2



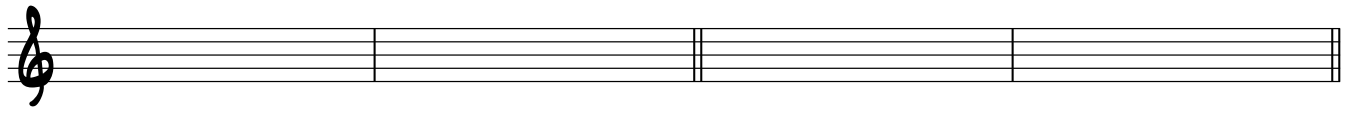
Aflyt og skriv de manglende harmonier :

2

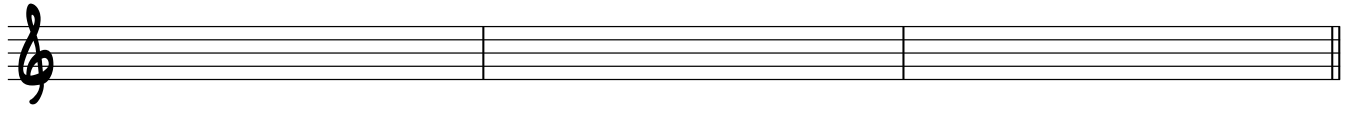
19 D F_{MAT}



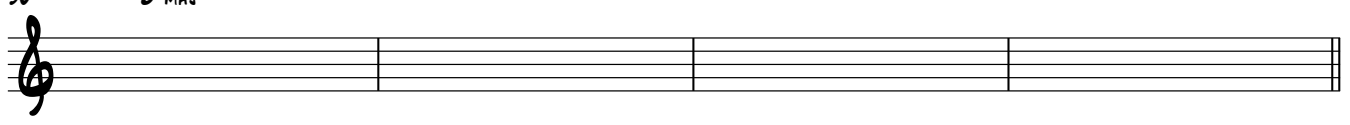
23 A_M⁷ C



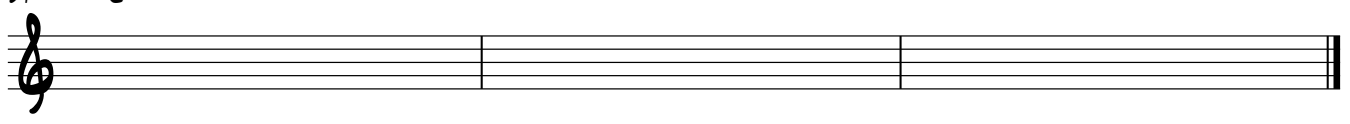
27 G_{MAT}



30 B^b_{MAT}




34 C

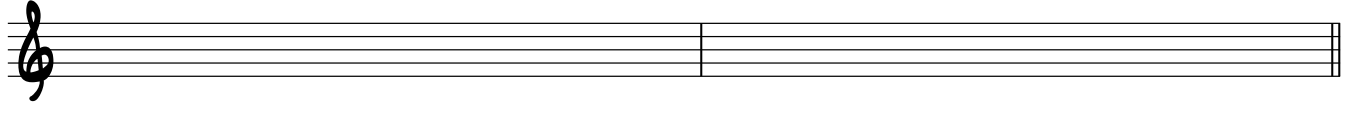


Melodinotation :

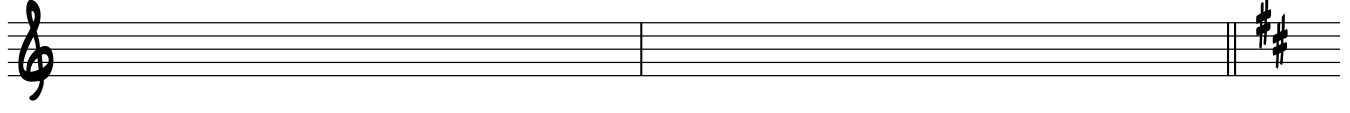
37



39

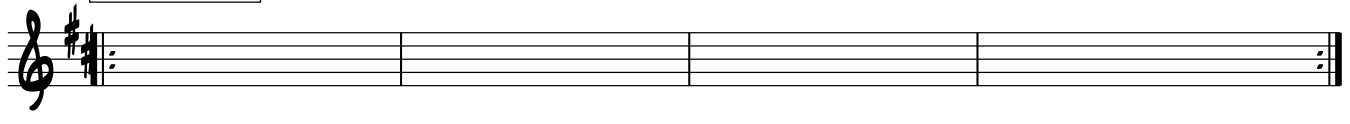


41

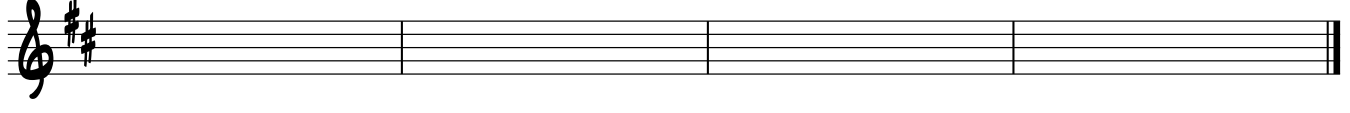


Båndex. 3

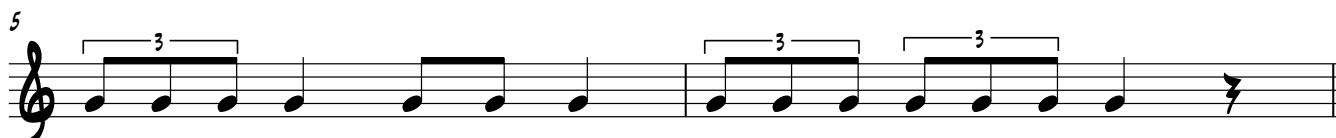
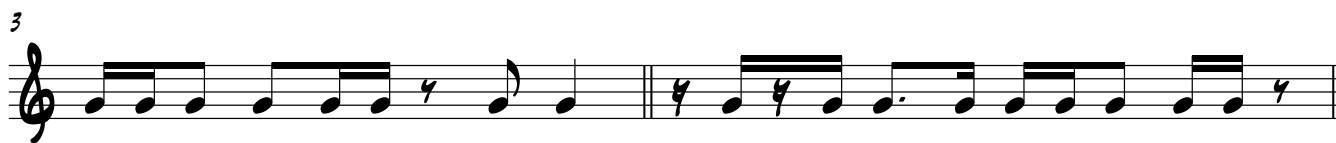
43



47



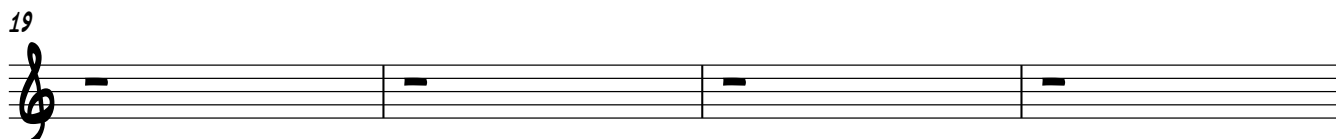
Rytmenotation



Båndex. 1




Båndex. 2




Aflyt og skriv de manglende harmonier :

2

23 D G A⁷ D F_{MAT} D⁷ G_{M⁷} C⁷




27 A_{M⁷} D⁷ G_{MAT} E⁷ C E⁷ F F^{#0}



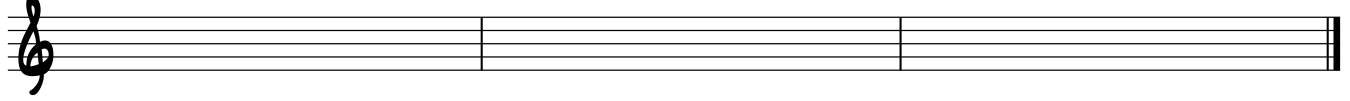
31 G_{MAT} F^{#_{M^{7b5}} B⁷ E_{M⁷}}



34 B^{b_{MAT}} F_{M⁷} B^{b⁷} E^{b_{MAT}} A^{b^{7#11}} B^{b_{MAT}}



38 C G^{7sus4} G⁷ C



Melodinotation :

41



43



45



47



51

